

311000 dwt crude oil carrier

m.t. **Lanistes**



This ULCC Tanker is designed to carry crude oil and condensates. Cargo is carried in the centre and wing tanks.

The cargo pipeline system comprises four lines and pumps. The outer lines serve the wing tanks and the inner lines serve the centres, thus providing good segregation between wing tanks and centre. Cross connections allow any tank to be drained by any pump.

The vessel is able to carry out ballasting and cargo operations concurrently.

Principal Particulars

Summer dwt:	311883 tonnes.
Summer draft:	22.37 metres (73ft. 5in)
Length overall:	343.6 metres (1127ft. 4in)
Beam (extreme):	56.0 metres (183ft 9in)
Depth (moulded):	28.65 metres (94ft. 0in)
Height (overall):	64.48 metres (211ft. 6in) keel to highest fixed point.

Year Built & Classification

Year:	1975
Classification:	Lloyds + 100 A1 oil carrier + LMC UMS

Tonnages

Gross Registered Tonnes:	150806
Net Registered Tonnes:	120258
Suez Net Tonnes:	148691
Panama Net Tonnes:	N/A
Lightship:	41190 Tonnes

Cargo Carriage Features

Total Capacity 98%:	All cargo tanks. 376451 cubic metres. (2,367,780 US barrels)
Number of Grades:	2
Inert Gas System:	Yes, with Crude Oil Wash capability.
Cargo Heating:	not available.
Tank Coating System:	none
Cargo Pumps:	4 centrifugal, self priming pumps, each 4500 m ³ /hr 1 reciprocating stripping pump, 350 m ³ /hr.

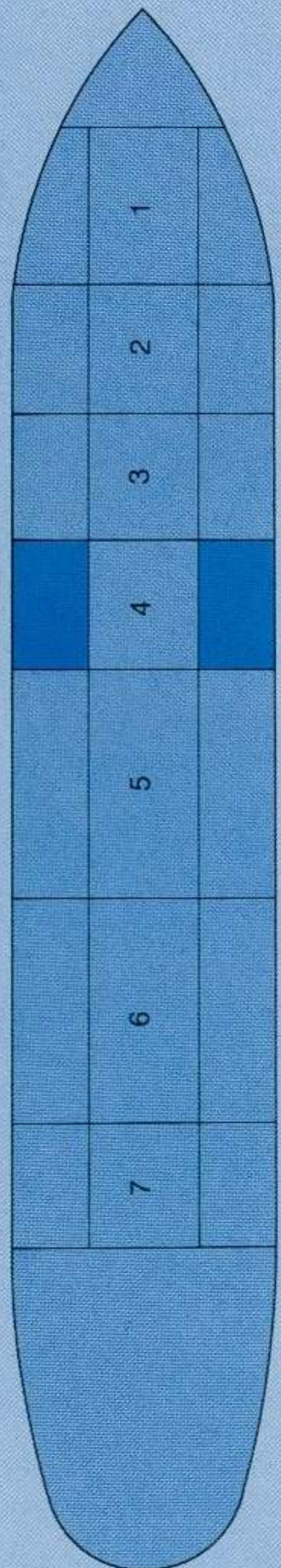
Cargo Tank Capacities

Tanks	Cu. metres 98%.
No.1C	23955
No.2C	25708
No.3C	29281
No.4C	28562
No.5C	25708
No.6C	25708
No.7C	8725
No.1Ws	26512
No.2Ws	38530
No.4Ws	58102
No.5ws	38680
No.6Ws	36169
slop tks	10811
Total	376451

Deadweight Scale (Approximate figures)

Draft (Metres)	DWT(tonnes)	Displacement(tonnes)	TPC
summer	311883	353073	170.8
22	305975	347165	170.2
21	288890	330080	168.8
20	271980	313170	167.4
19	255600	296790	166.0
18	238975	280165	164.8
17	222150	263340	163.6
16	205500	246690	162.5
15	189500	230690	161.6
14	171975	213165	160.8
13	157350	198540	160.2
12	141300	182490	159.5
11	125750	166940	158.9
10	109500	150690	158.2
9	93750	134940	157.4

Freshwater allowance 517 mm



Manifold Connections

Number and Size:	4 x 24"
Type of Flange:	Steel
Reducers, Number and Sizes:	8 x 24"-20", 4 x 24"-16", 4 x 24"-12".
Bow to Centre of Manifolds:	175 metres
Height Above Waterline:	on SWDT draft 7.67 metres on Ballast draft 17.6 metres.

Ballast Arrangements

Total Capacity of Ballast Tanks:	42922 cubic metres
Location & Type:	3 wings, permanent ballast tanks.
Ballast Pumps:	1 centrifugal pump 4250 m ³ /hr.

Mooring Equipment

Number & Location of Winches:	10, 3 forward, 1 maindeck forward, 2 maindeck aft and 4 poop.
Brake Capacity:	64 tonne.
Moorings:	Wires 12 x 280m x 44mm, 124 tonne. Ropes 2 x 420m x 72mm, 102 tonne.
Length of Anchor Cable:	14 shackles on each side
Number & Type of Bowstopper:	2 AKD SWL 200 tonne

Cranes/Derricks

Hose Handling:	2 x 15 tonne.
Particulars believed to be correct but not guaranteed.	

